

TORNADO
FLUSHER DISINFECTOR





Tornado

P. 92
NORMAL PROGRAM





PROVEN IN THE FIGHT AGAINST CROSS-INFECTION

The excellent cleaning and disinfection performance of *Tornado* has made it a well-established flusher disinfectant for hospitals and nursing homes, operating reliably and efficiently in soiled utility rooms around the world.

As well as ensuring efficient and cost-effective cleaning and disinfection of human waste containers, *Tornado* has been designed to offer options and features, such as the sensor-activated door, drying fan with HEPA filter and process validation systems, that provide even greater support of effective routines to combat cross-infection.

Tornado is a front-loaded flusher disinfectant that delivers excellent performance in the emptying, cleaning and thermal disinfection of bedpans, urine bottles and commode buckets. A series of high pressure water cycles delivered through strategically located fixed and rotating nozzles, and followed by a steam phase produces a result that meets and exceeds the stringent cleaning & disinfection requirements of ISO15883 (CAN/CSA Z15883).

Tornado has been upgraded in accordance with the ArjoHuntleigh policy to continuously improve its products and services. The result is a machine that can play an even more important role in your operations by offering the latest options and opportunities. In addition to the sensor-activated door, *Tornado* now includes systems for process validation, improved disinfection level flexibility, more efficient A0 controlling mechanisms to reduce process times while maintaining efficacy.

MORE CHOICE MEANS GREATER FLEXIBILITY

Tornado offers a choice of design materials that can match all soiled utility rooms needs. Process control and efficiency have been enhanced with the latest features and options, without compromising on cost effectiveness and the environment.



Flexible Design

The new standard casing is made of colourful polymeric material, offering an attractive, modern design. Every model is fitted with a stainless steel chamber, so *Tornado* can be made available as an all stainless steel model upon request.



Drying/Cooling fan

Receptacles are rapidly dried and cooled in the most hygienic way using HEPA-filtered (H13) air. Dry and cool receptacles are delivered at the end of the cycle, improving staff safety and and improving quality.



Automatic door function

To support hygienic non-contact routines, *Tornado* has an option for an automatic door activated by an IR sensor. To improve choice in automatic door operation, a foot pedal option can also be selected.



Pipe System Disinfection (PSD)

Rapid disinfection through all fixed and rotating nozzles also delivers a unique benefit, as the entire pipe and nozzle system is disinfected in every cycle, eliminating the risk of contamination.

Environmentally-friendly operation

Exceptionally low consumption of water, energy and chemicals reduces overall impact on the environment and keeps operational cost to its minimum. Furthermore, low heat emissions and a low noise level contribute to a better working environment.

Optional IP44 classification

With increased infection control awareness in hospital wards and departments all over the world, many patient rooms require a flusher disinfectant in the adjoining bathroom. Tornado can be delivered with a higher level of water ingress protection if installation is desired in patient ensuite bathrooms.



ENHANCING PROCESS CONTROL

Tornado has always been an ideal solution for reliable high-performance disinfection of human waste receptacles. Now, an enhanced software system, PACS350, enables greater process control and improves efficiency.

Remaining time sequence display

The display, showing the remaining time sequence in ten second intervals, allows staff to check on cycle progress, enabling them to plan their workflow more efficiently by eliminating time spent waiting for the process to end.



A₀ value and control

The A₀ value can be set to 60 or 600 for greater efficacy against more heat resistant microorganisms. The disinfection phase can also be controlled by either time and temperature, or by the chosen A₀ value to further shorten the cycle time.



Process record

Many healthcare facilities are moving towards greater reportability with detailed records of disinfection operations. With PACS350 control system, *Tornado* provides the option to record and track process operations via a printer or USB device.





CREATING A COMPLETE SOLUTION

Tornado plays a central role in an efficient soiled utility room, but is only one element in effective infection control. ArjoHuntleigh can help you to create an optimized soiled utility room and establish an overall infection control strategy.

The following three steps to create a complete solution:

STEP 1: Choosing the right holder

The universal holder fits most commonly used receptacles. There is also a wide range of holders available for other types of goods. These holders can handle a variety of bedpans, as well as most commode buckets and urine bottles. The optimal performance level can only be reached by selecting the optimal holder from the comprehensive standard range offered by ArjoHuntleigh.

STEP 2: Adding accessories

As well as the flusher disinfectant, we also offer a number of valuable accessories, such as our unique, anatomically

designed bedpan with lid. Our chemicals – an optimized rinse and deliming agent and a highly efficient detergent – are designed to meet the most stringent process demands.

STEP 3: Designing a complete soiled utility room

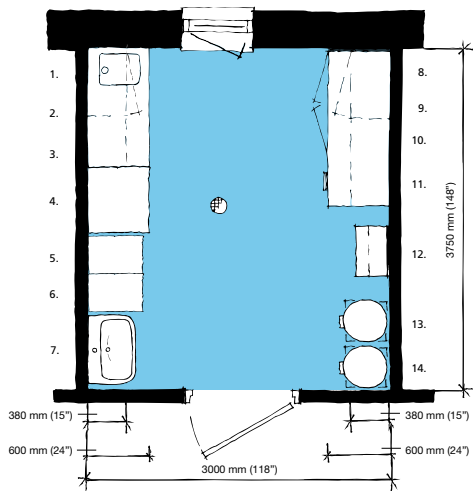
ArjoHuntleigh considers every aspect of the soiled utility room and provides a wide range of support from training in good hygiene routines to advice on room layout and equipment selection.



PRODUCT SPECIFICATIONS

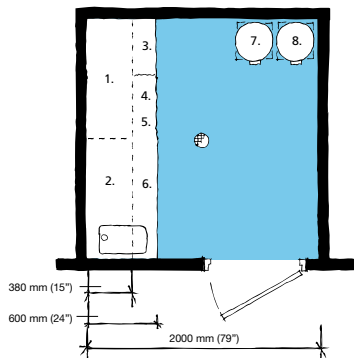
Space requirement

Layout example for large soiled utility room



- | | |
|---|--|
| 1. Lockable wall cabinet | 8. Lower lockable cabinets |
| 2. Sink unit with discharge table | 9. Work top |
| 3. Stainless steel shelves | 10. Heated storage cabinet |
| 4. Utensil washer disinfectant | 11. Clean storage shelf |
| 5. Flusher disinfectant | 12. Cleaning equipment for the soiled utility room |
| 6. Slop basin to empty large buckets | 13. Bag holder for dirty linen |
| 7. Hand washbasin with dispensers for liquid soap and disinfectant, disposable paper towels and waste paper bin | 14. Bag holder for refuse |

Layout example for small soiled utility room



- | | |
|----------------------------|---|
| 1. Clean storage shelves | 5. Sink unit with discharge table/worktop |
| 2. Lockable wall cabinet | 6. Lower cabinets |
| 3. Side-mounted slop basin | 7. Bag holder for refuse |
| 4. Flusher disinfectant | 8. Bag holder for dirty linen |

Product information

Weight	100 kg (220 lbs)
Width	450 mm (17 ¹¹ / ₁₆ "
Depth	580 mm (22 ³ / ₄ "
Height	1320 mm (51 ⁷ / ₈ "
Max. external temperature	40° C (100° F)
Noise level	53 dB (A) accordingly to EN ISO 3747:2000
Electrical connection	Contact your ArjoHuntleigh representative
Power Consumption	0.16 kWh/cycle
Water Consumption	Economy 11 litres/cycle ±10% Normal 18 litres/cycle ±10% Intensive 25 litres/cycle ±10%
Water Connection	Pressure 1-8 Bar (14-116 psi) 15 mm (1/2"), Rate of flow >0,3 l/s
Drain Connection	Wall ø 90 mm or 110 mm (3 1/2" or 4 1/4") Floor ø 90 mm or 110 mm (3 1/2" or 4 1/4")
Approvals	MDD 93/42/EEC Third party certificate for EN ISO 15883-1 and 15883-3

All products are CE marked.

Only ArjoHuntleigh designed parts, which are designed specifically for the purpose, should be used on the equipment and products supplied by ArjoHuntleigh. As our policy is one of continuous development we reserve the right to modify designs and specifications without prior notice.

© and ™ are trademarks belonging to the ArjoHuntleigh group of companies.
© ArjoHuntleigh, 2011



ARJOHUNTLEIGH

GETINGE GROUP

www.ArjoHuntleigh.com

GETINGE GROUP is a leading global provider of products and systems that contribute to quality enhancement and cost efficiency within healthcare and life sciences. We operate under the three brands of **ArjoHuntleigh**, **GETINGE** and **MAQUET**. **ArjoHuntleigh** focuses on patient mobility and wound management solutions. **GETINGE** provides solutions for infection control within healthcare and contamination prevention within life sciences. **MAQUET** specializes in solutions, therapies and products for surgical interventions, interventional cardiology and intensive care.

ArjoHuntleigh Canada Inc.
1575 South Gateway Road, Unit C
Mississauga, Ontario L4W 5J1
Phone: 800-665-4831
Email: info.canada@ArjoHuntleigh.com

ArjoHuntleigh Inc.
2349 West Lake Street
Addison, Illinois 60101
Phone: 800-323-1245
Fax: 630-925-7969

AXIOM™ Dual-Voltage Thermal Carafe Coffee Brewer



Model AXIOM-DV-TC
(thermal carafe sold separately)
Dimensions: 17.9" H x 9" W x 18.5" D
(44.8cm H x 22.9cm W x 47cm D)

Features

AXIOM Dual-Voltage Thermal Carafe Coffee Brewer

- Easily convertible by flipping a switch to:
 - 120 volt, 12.5 amp
 - 120/208 volt, 13 amp
 - 120/240 volt, 15 amp
- Brews 4.2 to 7.5 gallons (15.7 to 28.4 litres) of perfect coffee per hour.
- Accepts thermal carafe up to 8.5" tall (21.6 cm).
- Use in quick turn environments where high quality coffee is continuously refreshed.
- Adjusts automatically to varying water pressure.
- For high lime areas, BrewLOGIC™ technology calculates flow rate and adjusts brew time to maintain consistent pot levels.
- BrewWIZARD™ technology simplifies brewer programming with a LCD display. Set brew level, pulse brew, cold brew lock-out and tank temperature from the front of the machine.
- Electronic diagnostics and built in tank drain make service easier.
- Ensures coffee brew quality with cold brew lock out capability.
- SplashGard® funnel deflects hot liquids away from the hand.
- Coffee extraction controlled with pre-infusion, pulse brew and digital temperature control.
- Energy-saver mode reduces tank temperature during idle periods.
- Hot water faucet.

For current specification sheets and other information, go to www.bunn.com.

Related Products

Easy Clear® EQ-17-TL

Product No. : 30200.1000
Dimensions:
12 $\frac{7}{16}$ " H x 2 $\frac{1}{2}$ " W x 3" D
31.6 cm H x 6.35 cm W x 7.62 cm D



Easy Clear® ED-17-TL

Product No. : 30201.1001
Dimensions: 8 $\frac{1}{4}$ " H x 2 $\frac{5}{16}$ " Dia.
20.95 cm H x 5.87 cm Dia.

Paper Filter Pack

Product No. : 20115.0000
Packed per case: 1,000
Dimensions: 4 $\frac{1}{4}$ " Base x 2 $\frac{3}{4}$ " Sidewall
10.8 cm Base x 6.98 cm Sidewall



Thermal Carafe

Product No. : 36029.0001
Dimensions: 8"H x 6.4"W x 8.2"D
(20.3cm H x 16.3cm W x 21cm D)



Thermal Carafe (orange lid)

Product No.: 36252.0001
Dimensions: 8"H x 6.4"W x 8.2"D
(20.3cm H x 16.3cm W x 21cm D)



Model

AXIOM-DV-TC

Agency Listing



Dimensions & Specifications

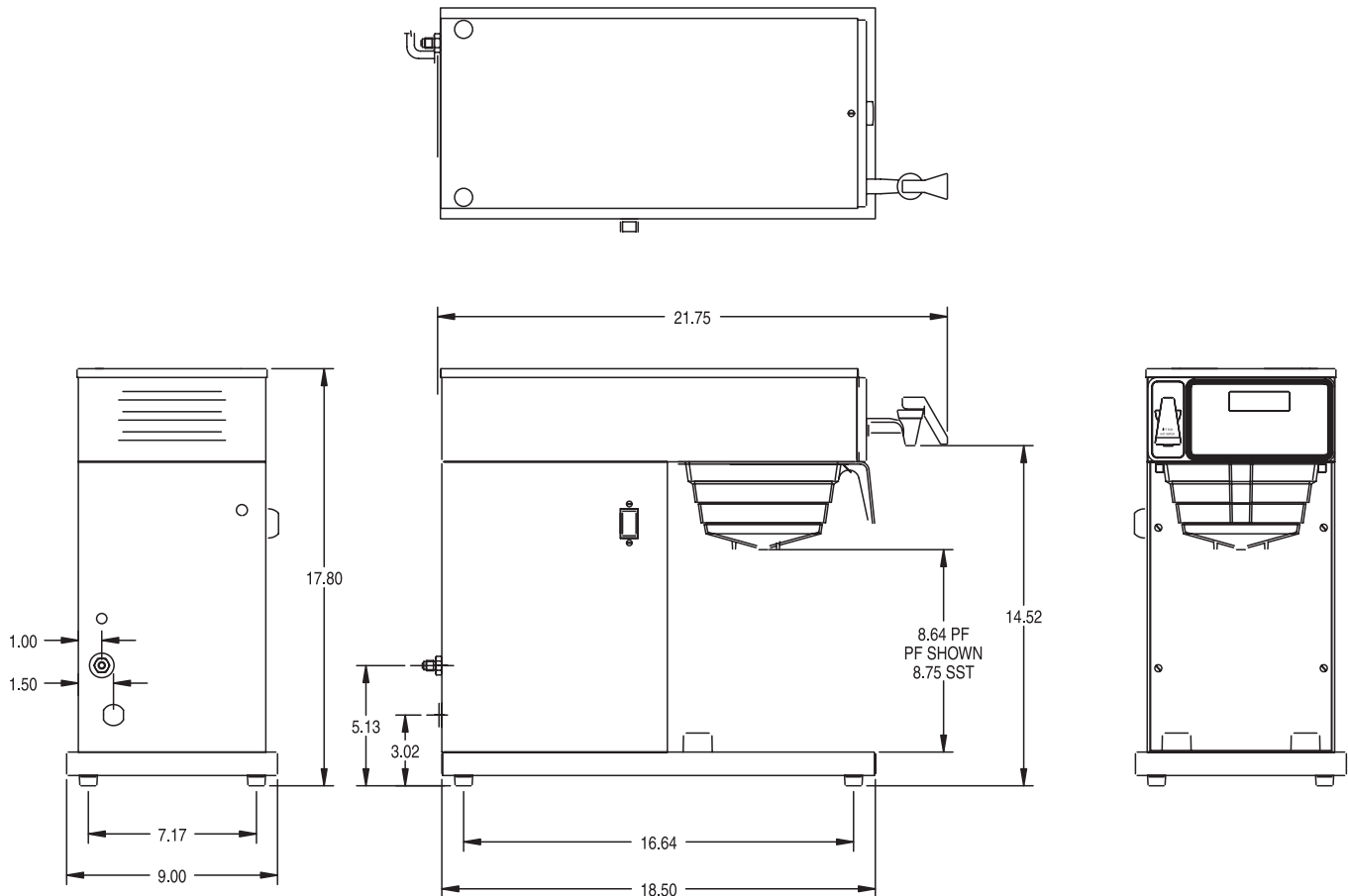
Model	Product #	Volts	Amps	Tank Heater Watts	Total Watts	Brewing Capacity	Cu. Ft.	Shipping Weight	Cord Attached
AXIOM-DV-TC	38700.0011	120	12.5	1425	1500	4.2 gal./hr.	4.3	30 lbs.	Yes
		120/208	13	2620	2680	7.5 gal./hr.			
		120/240	15	3500	3550	7.5 gal./hr.			

Brewing capacity: based upon incoming water temp of 60°F (140°F rise) per 1/2 gallon brew time of 4 minutes.

Electrical: If wired for 120V, requires 2-wires plus ground service rated 120V, single phase, 60 Hz.

If wired for 120/208V or 120/240V, requires 3-wires plus ground service rated 120/208V or 120/240V, single phase, 60 Hz.

Plumbing: 20-90 psi (138-621 kPa). Supplied with 1/4" male flare fitting.



Bunn-O-Matic® Corporation - 1400 Stevenson Drive Springfield, Illinois 62703 • 800-637-8606 • 217-529-6601 • Fax 217-529-6644 • www.bunn.com

BUNN® practices continuous product research and improvement. We reserve the right to change specifications and product design without notice. Such revisions do not entitle the buyer to corresponding changes, improvements, additions or replacements for previously purchased equipment.

All dimensions shown in inches.

Attachment 2 to Appendix 2D - Equipment Data Sheets (Swift Current Long Term Care Centre Project)

© 2009 Bunn-O-Matic Corporation

EXECUTION COPY

HOBART701 S Ridge Avenue, Troy, OH 45374
1-888-4HOBART • www.hobartcorp.com**LXi
DISHMACHINE****HOBART****STANDARD FEATURES**

- 30 racks per hour
- .74 gallons of water per rack
- Hot water or chemical sanitation units available
- Low chemical alert indicator (on machines ordered with pumps, standard on chemical machine)
- Sense-A-Temp™ booster heater capable of 70° rise, provided on LXIH models
- Delime notification with cycle
- Chemical pump “auto-prime”
- Service diagnostics
- 16 gauge stainless steel tank
- Microcomputer, top mounted controls with digital cycle/temperature display
- Revolving upper and lower anti-clogging wash arms
- Revolving upper and lower rinse arms
- Removable stainless steel scrap screen
- Corrosion resistant pump
- Automatic pumped drain
- 17" door opening
- Automatic fill
- Labyrinth-type door seal
- Electric tank heat
- Two dishracks – one peg and one combination-type

STANDARD VOLTAGES

- 120/60/1 (LXiC model only)
- 120/208-240(3W)/60/1

OPTIONS AT EXTRA COST

- 208-240(2W)/60/1
- Detergent and rinse aid pumps

ACCESSORIES

- Power cord kits
- Stainless steel base with 6" legs
- 17" stainless steel stand
- Pressure regulator valve
- Trim kit, top cover
- Rolled top, dish rack holder
- DWT2 drain water tempering kit

Specifications, Details and Dimensions on Inside and Back.

**LXi DISHMACHINE**

LXi DISHMACHINE



701 S Ridge Avenue, Troy, OH 45374
1-888-4HOBART • www.hobartcorp.com

WARNING:

REQUIRED FLOWING WATER PRESSURE TO THE DISHMACHINE IS 20 ± 5 PSIG. IF PRESSURES HIGHER THAN 25 PSIG ARE PRESENT, A PRESSURE REGULATING VALVE MUST BE INSTALLED IN THE WATER LINE TO THE DISHMACHINE (BY OTHERS).

IMPORTANT: THE SODIUM HYPOCHLORITE (LIQUID BLEACH) CONTAINER SHOULD BE PLACED NO HIGHER THAN 10" ABOVE FLOOR.

IF BLEACH CONTAINER IS TO BE PLACED IN CABINET ADJACENT TO MACHINE, A 1/2" DIA. HOLE IS REQUIRED IN THE CABINET TO RUN BLEACH SUPPLY LINE.

USE ONLY 6% SODIUM HYPOCHLORITE (LIQUID BLEACH) AS SANITIZING CHEMICAL TO INSURE PROPER OPERATION OF DISHMACHINE. IF 8.4% IS TO BE UTILIZED CONTACT HOBART SERVICE TO CHANGE THE SANITIZER PUMP SETTINGS.

DO NOT PRE-MIX RINSE AGENT AND SODIUM HYPOCHLORITE (LIQUID BLEACH).

CERTAIN MATERIALS INCLUDING SILVER PLATE, ALUMINUM AND PEWTER ARE ATTACKED BY SODIUM HYPOCHLORITE (LIQUID BLEACH). SEE INSTRUCTIONAL MANUAL.

STEAM GENERATED FROM NORMAL OPERATION MAY ESCAPE FROM THE DOOR. WOOD LAMINATE, VENEERS, ETC. ARE UNSUITABLE MATERIALS FOR USE IN AREAS EXPOSED TO DISHWASHER STEAM AND DETERGENTS. STAINLESS STEEL OR OTHER MOISTURE-RESISTANT SHIELDS ARE RECOMMENDED FOR SURFACES ADJACENT TO LXI SIDES AND TOP.

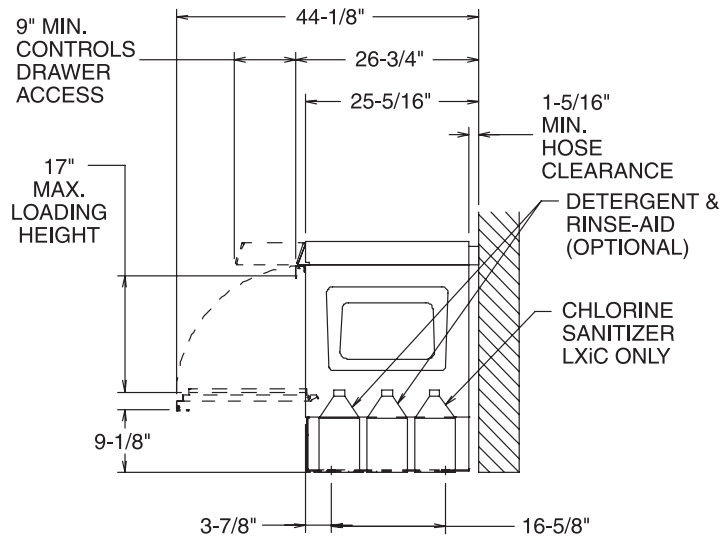
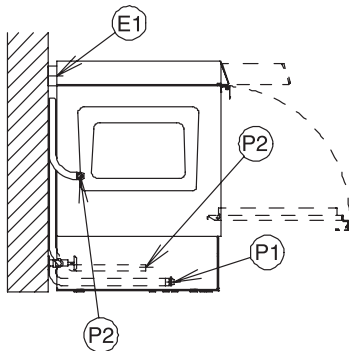
NOTES:

1. ALL VERTICAL MACHINE DIMENSIONS TAKEN FROM FLOOR MAY BE INCREASED BY 1".
2. MOIST AIR ESCAPES FROM THE DOOR. USE ONLY MOISTURE RESISTANT MATERIALS ADJACENT TO LXI SIDES AND TOP.
3. A VENT HOOD IS NOT RECOMMENDED ABOVE THE LXI UNDERCOUNTER DISHWASHER SINCE IT DOES NOT PRODUCE EXCESSIVE VAPORS

PLUMBING NOTES:

1. WATER HAMMER ARRESTOR (MEETING ASSE-1010 STANDARD OR EQUIVALENT) TO BE SUPPLIED (BY OTHERS) IN COMMON WATER SUPPLY LINE AT SERVICE CONNECTION.
2. RECOMMENDED WATER HARDNESS TO BE 4-6 GRAINS FOR BEST RESULTS.
3. MINIMUM WATER CONDUCTIVITY REQUIRED - 30 MICROMHOS/CM.

⚠️ IF DRAIN HOSE IS LOOPED ABOVE A SINK, THE LOOP MUST NOT EXCEED 38" AFF.



MACHINE TYPE & SPECIFICATION	RATED AMPS	MIN SUPPLY CKT CONDUCT AMPACITY	MAX PROTECTIVE DEVICES
LXiC (120/60/1) USE 90°C STRANDED COPPER WIRE ONLY.	15.4	20	20
LXiC (120/208-240(3W)/60/1*) LXiC (208-240/60/1) USE 90°C STRANDED COPPER WIRE ONLY.	13.6	20	20
LXiH (120/208-240(3W)/60/1*) LXiH (208-240/60/1) USE 90°C STRANDED COPPER WIRE ONLY.	37.7	50	50
ELECTRICAL OPTIONS BELOW ARE NON STANDARD VOLTAGES AVAILABLE AT EXTRA COST. CONSULT FACTORY FOR PRICING AND LEAD TIME.			
LXiH 208-240/60/3	29.5	35	35
480/60/3	14.8	20	20
220-240/50/1	38.1	50	50
380-400/60/3	17.1	25	25

**CONNECTION INFORMATION
(AFF = ABOVE FINISHED FLOOR)**

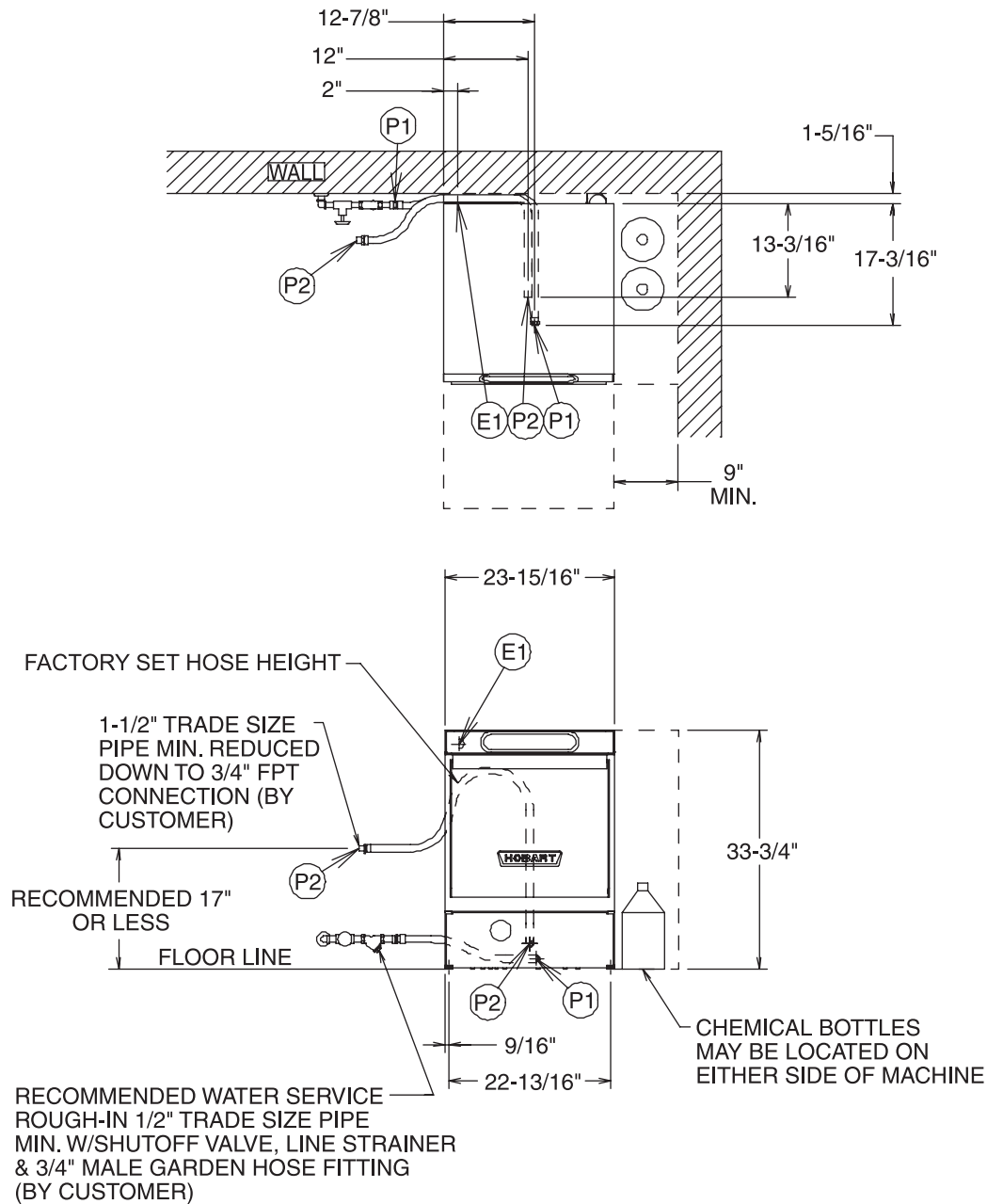
LEGEND

- E1 ELECTRICAL CONNECTION: 1-3/8" DIA. HOLE FOR 1" TRADE SIZE CONDUIT; 31-3/4" AFF.
- P1 SINGLE FILL AND RINSE CONNECTION: 3/4" FEMALE GARDEN HOSE FITTING ON 6' LONG HOSE SUPPLIED WITH MACHINE; 140°F WATER MIN. FOR LXiC, 110°F WATER MIN. FOR LXiH, 1-1/2" AFF.
- P2 DRAIN CONNECTION: 3/4" MPT FITTING WITH 6' LONG HOSE SUPPLIED WITH MACHINE; 3-9/16" AFF.



701 S Ridge Avenue, Troy, OH 45374
1-888-4HOBART • www.hobartcorp.com

LXi DISHMACHINE



* THIS SYSTEM REQUIRES THREE POWER WIRES WHICH INCLUDES A CURRENT CARRYING NEUTRAL, AN ADDITIONAL FOURTH WIRE MUST BE PROVIDED FOR MACHINE GROUND.

ACCESSORY CORD KITS AVAILABLE FOR ALL MACHINES

WARNING

ELECTRICAL AND GROUNDING CONNECTIONS MUST COMPLY WITH THE APPLICABLE PORTIONS OF THE NATIONAL ELECTRICAL CODE AND/OR OTHER LOCAL ELECTRICAL CODES.

PLUMBING CONNECTIONS MUST COMPLY WITH APPLICABLE SANITARY, SAFETY AND PLUMBING CODES. DRAIN AND FILL LINE CONFIGURATIONS VARY, SOME METHODS ARE SHOWN ON THIS DRAWING.

SHIPPING WEIGHTS (LBS)	LXiC	LXiH
NET WEIGHT OF MACHINE	190 lbs.	210 lbs.
DOMESTIC SHIPPING WEIGHT	235 lbs.	255 lbs.

MODELS:
LXiC, LXiH
892882

LXi DISHMACHINE



701 S Ridge Avenue, Troy, OH 45374
1-888-4HOBART • www.hobartcorp.com

SPECIFICATIONS

DESIGN: Front opening, equipped for installation of both freestanding and undercounter-type operations.

CONSTRUCTION: 304 series stainless steel tank, door and top panel.

PUMP: Centrifugal-type, integral with motor, horizontally mounted. Pump capacity 54 gpm.

MOTOR: Single phase, split-phase type, furnished for 120/60/1 or 208-240/60/1 electrical specification. Factory sealed lubrication. Inherent overload protection with auto reset. Also available with three phase motors at extra cost.

WASH AND RINSE CYCLE: Complete automatic type, controlled by solid-state electronics. Cycle may be interrupted any time by opening door. Cycle continues when door is closed.

- Initial cycle fills wash tank, to be recirculated each wash cycle. Some wash water is drained off before rinse cycle. Rinse cycle refreshes wash water and tank heat.

RINSE AND SANITATION:

- LXiH:** Sanitation is accomplished by means of a built-in booster heater designed to raise temperature of water to a minimum of 180°F from an incoming water temperature of 110°F.
- LXiC:** Sanitation is accomplished by injection of proper amount of sodium hypochlorite solution (liquid bleach) into final rinse water to achieve a minimum of 50PPM sanitizing solution. Injection of sodium hypochlorite is accomplished by a built-in sanitizing chemical pump.

PUMPED DRAIN: Machine automatically drains water through a built-in pump. Maximum 38" drain height permitted.

RACKING: Machines accommodate racks from 10" x 20" to 20" x 20". Also accepts 16" x 18" cafeteria trays.

CAUTION: Certain materials, including silver, aluminum and pewter are attacked by Sodium Hypochlorite solution in the chemical sanitizing mode of operation.

SPECIFICATIONS: Listed by Underwriters Laboratories Inc. and NSF International.

MACHINE RATINGS	LXiC	LXiH
Racks per Hour Rate	30	
Dishes per Hour (25 per Rack Avg.)	750	
Glasses per Hour (36 per Rack Avg.)	1080	
Controls	Microcomputer	
Tank Capacity - Gallons	3	
Overall Dimensions - H x W x D	33 ³ / ₄ " x 23 ¹⁵ / ₁₆ " x 26 ³ / ₄ "	
Cycle Time - Minutes	2	
Tank Heat	1.5 KW	
Electric Booster Heater	N/A	6 KW
Water Usage Per Rack - Gallons	.74	
Drain Design	Pumped	
Door Opening Height	17"	
Chemical Connection Capability	Standard	
Detergent Pump	Optional	
Rinse-Aid Pump	Optional (W/Det Pump)	
Sanitizer Pump	Standard	N/A
Chemical Prime (auto prime)	Standard	
Peak Drain Flow - GPM	4	
Service Diagnostics	Standard	
70° Rise Sense-A-Temp™ Booster Heater	N/A	Standard

As continued product improvement is a policy of Hobart, specifications are subject to change without notice.

HOBART701 S Ridge Avenue, Troy, OH 45374
1-888-4HOBART • www.hobartcorp.com**ET SERIES
SOLID STATE TOASTERS****HOBART****STANDARD FEATURES**

- Solid State Temperature Sensor and Probe
- Stainless Steel Exterior with Seamless, Single Piece Front and Top
- 4 lb. Pressure Carriage Handle
- Removable Crumb Tray
- High Production Output

MODELS

- ET13 – 2-Slice Bread w/Cordset
- ET26 – 4-Slice Bread
- ET27 – 4-Slice Bread w/Cordset
- ET262 – 8-Slice Bread (2 ET26's with 1 Tiered Stand)
- ET264 – 16-Slice Bread (4 ET26's with 2 Tiered Stands)

IN ACCORDANCE WITH
NSF STD. #4**ACCESSORIES**

- CX215 Stand for Two 4-Slice Units
- CX370 Receptacle for CX303 Cordset
- CX369 Receptacle for CX273 Cordset

Specifications, Details and Dimensions on Inside and Back.

**ET SERIES SOLID STATE TOASTERS**

ET SERIES SOLID STATE TOASTERS



701 S Ridge Avenue, Troy, OH 45374
1-888-4HOBART • www.hobartcorp.com

LISTED BY: UNDERWRITERS LABORATORIES INC.

SPECIFICATIONS

DESIGN: Two-and four-slot automatic electric pop-up toasters with 1" wide slots. Two-piece body with stainless steel exterior. Slot openings are individually enclosed toasting chambers with one crumb tray for each two slots. Openings are radiused to prevent crumbs from entering interior. Bottom crumb tray cover.

CONTROLS: Solid state controls to adjust toasting time. Automatically compensates for ambient temperature and voltage fluctuations. Color control provides a full range from light to dark.

HEATERS: Open-ribbon, resistance alloy type heaters.

DETAILS AND DIMENSIONS

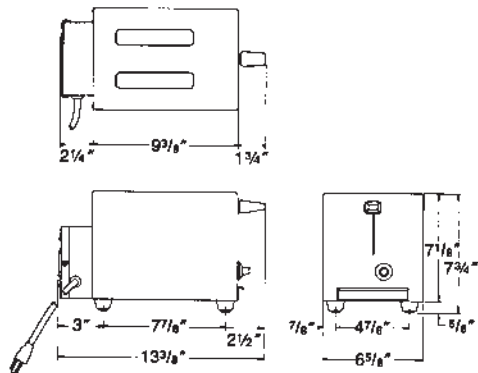
MODEL	DESCRIPTION	TOASTER OUTPUT (SLICES/HOUR)		
		LIGHT	MED.	DARK
ET13	2-slice bread w/cordset	200	145	95
ET26	4-slice bread	400	290	130
ET27	4-slice bread w/cordset			
ET262	8-slice bread (2 ET26's with 1 tiered stand)	800	580	260
ET264	16-slice bread (4 ET26's with 2 tiered stands)	1600	1160	760

ELECTRICAL:

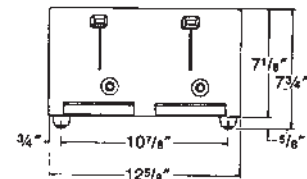
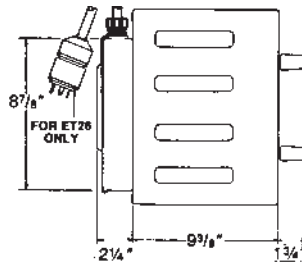
MODEL	KW RATING	NOMINAL AMPS PER LINE WIRE			
		120/208V-120/240V	120V	208V	240V
		60 Hz - Single Phase			
ET13	1.4		11.7	6.7	5.8
ET26	2.8	11.7 (23.3)*	23.3	13.5	11.7
ET27	2.8	11.7 (23.3)*	N.A.	13.5	11.7
ET262	5.6	SEE AMP. LOADINGS FOR INDIVIDUAL ET26			
ET264	11.2	SEE AMP. LOADINGS FOR INDIVIDUAL ET26			

TOASTER CORDSET GUIDE:

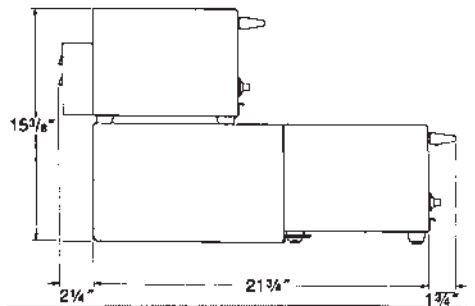
TOASTER MODEL AND VOLTAGE	CORDSET MODEL AND PLUG CONFIGURATION
ET13 120V 2-pole/3-wire	CX323 (Furnished std.) NEMA 5-15P GE 4363-5 Hubbell 5264 4' long
ET13-ET27 208V or 240V 2-pole/3-wire	CX273 (Furnished std.) NEMA 6-15P GE 4366-5 Hubbell 5664
ET26	CX273 (Accessory) 4' long
ET26 120/208V 120/240V 3-pole/4-wire	CX303 (Accessory) NEMA 14-20P Hubbell 8411 4' long
ET27	CX303 (Furnished std.)
ET26 120V 2-pole/3-wire	CX302 (Accessory) NEMA 5-30P Hubbell 9309 3' long



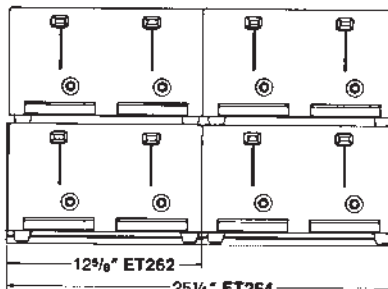
ET13



ET26-ET27



ET262-ET264



ET262-ET264

As continued product improvement is a policy of Hobart, specifications are subject to change without notice.



Kenmore Elite®/MD Double Oven Free-Standing Range - Stainless Steel

Item #: 223 660 043 10

\$2,399.99

In Stock

Kenmore is Canada's #1 Selling Brand of Major Appliance
 • ENERGY STAR® Qualified: No



full product details & product warranty

Colour	
Cabinet	Stainless Steel
Cooktop features	
Misc. Cooktop Feature(s)	3200w Turbo Boil Element
1st Expandable Element	12/9/6"
2nd Expandable Element	0
Cooktop material	White Glass
Warming Zone	Yes
Warming Zone (W)	100
Back Left Element	6" Radiant - 1200W
Back Right Element	6" Radiant - 1200W
Drip Trays	Not Applicable
Front Left Element	9" Radiant - 3200w
Front Right Element	6/9/12" Radiant - 3000W
Design	
Control Panel Material	Glass
Control Panel	Black
Control Panel Lighting	Night Light
Oven Type	Self-Cleaning
Small Appliance Outlet(s)	None
Type of Timer	Prc Touch Control
Wheels/Legs	Adjustable Legs
Design features	

Product weight (lb.)	260.0
Dimensions	
Product depth (in.)	26.5
Product height (in.)	48.0
Product width (in.)	30.0
Energy features	
EnerGuide (kWh/year)	0
Lower oven features	
Bake Element Pass	8
Bake Element Power (W)	2500
Broil Element Pass	6
Broil Element Power (W)	3400
Cavity Material	Porcelain On Steel
Convection Conversion	Yes
Convection Element	Yes
Convection Element Power (W)	2500
Convection Fan	1 Speed
Door Material	White Glass
Hidden Bake Element	Yes
Interior Oven Light	1
Number Of Rack Positions	4
Oven Accessories (Included)	None
Oven Capacity (cu. ft.)	4.34
Oven Interior Depth (In.)	18.9
Oven Interior Height (In.)	16.5
Oven Interior Width (In.)	24.1
Oven Type	Self Cleaning Convection
Oven Window	Extra Large
Specialty Racks (Included)	None
Warming Drawer	No
Warming Drawer Power (W)	0
Other features	
ENERGY STAR® Qualified	No
Oven features	

Sabbath mode	Yes
Oven Accessories (Included)	None
Bake Element Pass	6
Bake Element Power (W)	2200
Broil Element Pass	8
Broil Element Power (W)	3000
Capacity (cu. ft.)	2
Cavity Material	Porcelain On Steel
Convection Conversion	Not Applicable
Convection Element	No
Convection Element Power (W)	0
Convection Fan	Not Applicable
Door Material	White Glass
Hidden Bake Element	Yes
Misc. Oven Feature(s)	Pizza Button on Top Oven
Number Of Rack Positions	4
Number of Racks	1 Porcelain Coated
Oven Interior Depth (In.)	19.3
Oven Interior Height (In.)	8.3
Oven Interior Width (In.)	24.3
Oven Lights	1
Oven Window	Large
Specialty Racks (Included)	None
Warming Drawer	No
Warming Drawer Power (W)	0
Safety features	
Hot-surface indicator lights	5
Warranty Information	
All - Labour	1 year
All - Parts	1 year
Breakage-Cooktop Glass - Labour	1 year
Breakage-Cooktop Glass - Parts	5 years
Electronic Controls - Labour	1 year
Electronic Controls - Parts	1 year

Elements - Labour	1 year
Elements - Parts	5 years
Porcelain Liner&Inner Dr - Labour	1 year
Porcelain Liner&Inner Dr - Parts	1 year



Kenmore®/MD 26.7 cu. Ft. French Door Refrigerator - Stainless Steel

At a glance

\$1,999.97

Item #: 463 670 313 10



Item Details

Green LED display with 8 buttons including Water, Crush, Cube, Water Filter Reset, Dispenser Lock, System On/Off, I/M On/Off, Dispenser Light On/Off.

Mfg. number: 2537031321

Real stainless that is easy to clean and resists fingerprints

3 half-width glass sliding spill safe shelves

1 quarter-width glass sliding spill safe shelf

Full Width Deli Drawer

2 X 40W bulbs located on the back

2 Adjustable clear bins and 5 total door bins (left and right door)

Self-closing freezer drawer



See more products by [Kenmore®/MD](#)

Design	
Controls	Electronic
Cooling coil location	Bottom
Door Colour	Stainless Steel
Door Panel Options	None
Door Trim Kit	No
Filtered Water	With Filtered Monitor

Reversible Doors	No
Total capacity (cu. ft.)	26.70
Wheels/Legs	2 Adjustable & 2 Non-Adjustable
Design Features	
Product depth (in.)	30.17
Product height (in.)	69.38
Product width (in.)	35.63
Dimensions and weight	
Product Height (In.)-Excluding hinge cover	68.25
Product depth without handles (in.)	33.05
Operational Features	
Misc. Feature(s)	Coated Stainless
Sound reduction system	Yes
Energy features	
EnerGuide (kWh/year)	487
Freezer features	
Can Rack	No
Defrost System	Auto Cycle Defrost
Freezer capacity (cu. ft.)	7.66
Freezer light	Yes
Icemaker/Dispensers	Elctrnc Water/Cubed/Crshed Ice
Misc. Feature(s)	Basket Dividers
Number of Pullout Baskets	2
Number of freezer door bins	None
Number of freezer shelves	None
Refrigerator features	
Adjustable refrigerator door bins	2
Crispers	2 On Rollers W/Humidity Cntrl

Dairy Compartments	One
Food Storage Accessories	None
Interior Lights	Two
Meat Keeper	Yes
Number of refrigerator door shelves	None
Number of refrigerator shelves	4 Partial-No Full
Refrigerator capacity (cu. ft.)	19.02
Refrigerator shelf material	Spill-Proof Glass(3 Pullouts)
Shelf Suspension	Cantilever
Snack bin	None
Washer features	
Cabinet	Grey
Warranty Information	
All - Labour	1 year
All - Parts	1 year
Compressor - Labour	1 year
Compressor - Parts	1 year
Compressor&Sealed System - Labour	1 year
Compressor&Sealed System - Parts	1 year

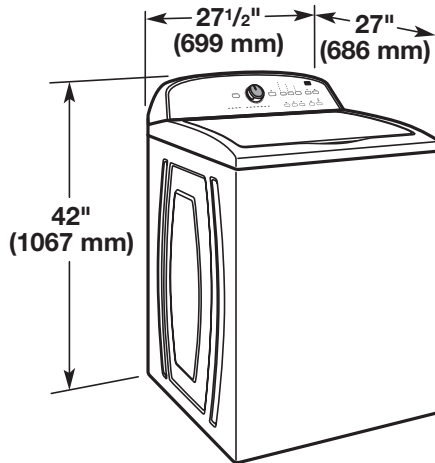


Top-Loading Automatic Washer

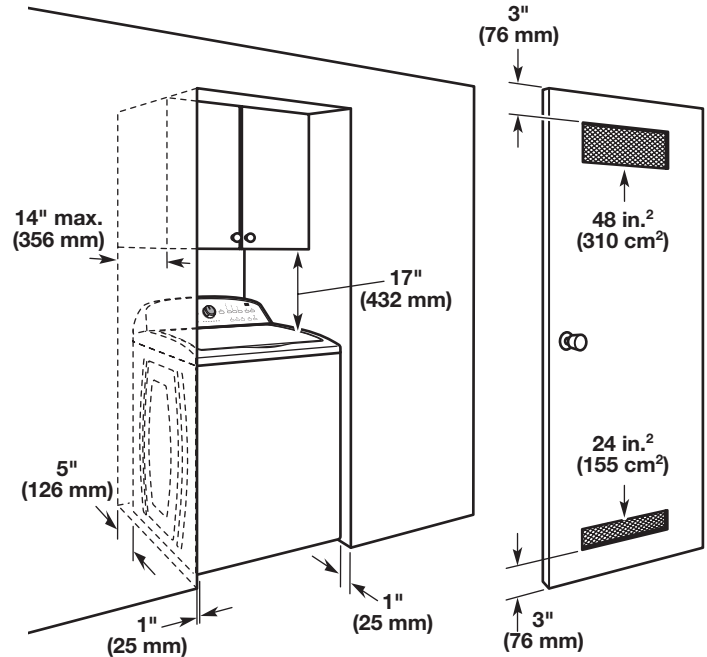
PRODUCT MODEL NUMBERS

MVWC200X, MVWC400X, MVWC450X, MVWX500X, MVWX600X, MVWX700X, MVWC300X, MVWX550X, MVWC350A, MVWC360A, MVWC200B, MVWC300B, MVWC425B

Washer dimensions



Recessed area or closet installation



Dimensions show recommended spacing allowed, except for closet door ventilation openings which are minimum required. This washer has been tested for installation with spacing of 0" (0 mm) clearance on the sides. Consider allowing more space for ease of installation and servicing, and spacing for companion appliances and clearances for walls, doors, and floor moldings. Add spacing of 1" (25 mm) on all sides of washer to reduce noise transfer. If a closet door or louvered door is installed, top and bottom air openings in door are required.

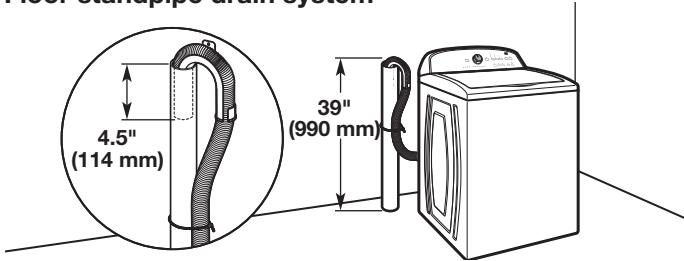
ELECTRICAL REQUIREMENTS

A 120 volt, 60 Hz., AC only, 15- or 20-amp, fused electrical supply is required. A time-delay fuse or circuit breaker is recommended. It is recommended that a separate circuit serving only this appliance be provided.

DRAIN SYSTEM

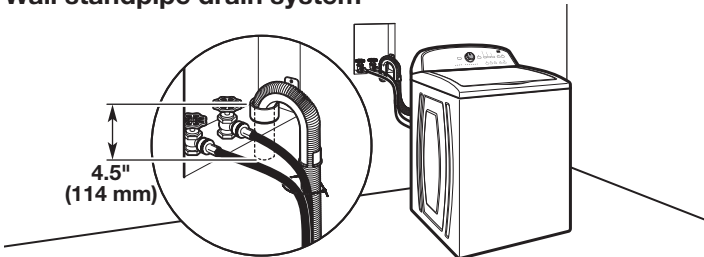
Drain system can be installed using a floor drain, wall standpipe, floor standpipe, or laundry tub. Select method you need.

Floor standpipe drain system



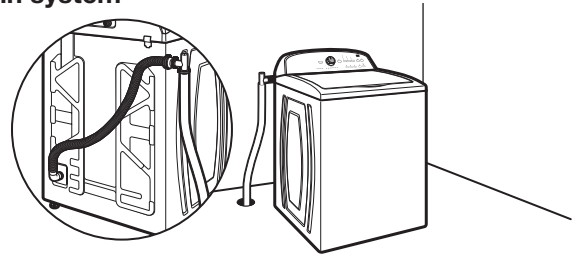
Minimum diameter for a standpipe drain: 2" (51 mm). Minimum carry-away capacity: 17 gal. (64 L) per minute. Top of standpipe must be at least 39" (990 mm) high; install no higher than 96" (2.44 m) from bottom of washer. If you must install higher than 96" (2.44 m), you will need a sump pump system.

Wall standpipe drain system



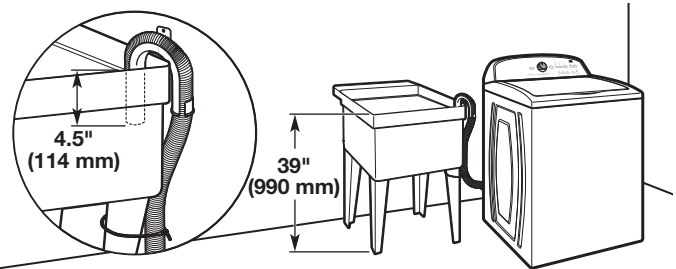
See requirements for floor standpipe drain system.

Floor drain system



Floor drain system requires a Siphon Break Kit (Part Number 285834), 2 Connector Kits (Part Number 285835), and an Extension Drain Hose (Part Number 285863) that may be purchased separately. To order, please see toll-free phone numbers in your Use and Care Guide. Minimum siphon break: 28" (710 mm) from bottom of washer. (Additional hoses may be needed.)

Laundry tub drain system



Minimum capacity: 20 gal. (76 L). Top of laundry tub must be at least 39" (990 mm) above floor; install no higher than 96" (2.44 m) from bottom of washer.

IMPORTANT: To avoid siphoning, no more than 4.5" (114 mm) of drain hose should be inside standpipe or below the top of wash tub. Secure drain hose with cable tie.

Products

Medical Beds

Lifting & Transfers

Hygiene Systems

- Daily Hygiene
- Bathing
 - Central bathing area
 - ▶ Century
 - ▶ Parker Bath
 - Product Specification
 - Space Requirements
 - Technical Information
 - Product Presentation
 - ▶ Rhapsody & Primo
 - ▶ Classic Line
 - ▶ MultiClean
 - Private bathing area
 - Hygiene Lifters
 - Burns Treatment
 - Liquids
 - Carendo
 - Enhance Bathing Experience

Therapeutic Surfaces

DVT Prevention

Wound Healing

Disinfection

Therapeutic Support Systems®

Diagnostics

Couches

Special Solutions

Mobility Gallery



Parker Bath - Technical Information 

Tub length in the upright position	1855 mm / 73"
Tub length in reclined position	1960 mm 77 1/8"
Tub width	750 mm / 29 1/2"
Height of door with bath in highest position, feet in lowest position	2510 mm 98 7/8"
Maximum resident/patient weight	210 kg / 463 lbs
Maximum Load (resident + water)	300 kg / 661 lbs
Transfer height at lowest position	565 mm / 22 1/4"
Transfer height at highest position	685 mm / 27"
Max Duty Cycle Lift/Hi-Lo	1 min ON, 9 min OFF
Max duty cycle <i>Air Spa</i>	15 min ON, 15 min OFF
Operating forces of controls (Control Panel)	4 N
Operating forces of controls (Hand Control)	3 N
Operating forces of controls (S&V Hand Control)	3 N
Medical Equipment	Type B

Water

Water consumption (prefilled foot well volume)	96 L / 25,4Gal
Filling time at 3.0 Bar (43.5 PSI) dynamic pressure 100 sec (prefill)	
Water content up to overflow level	230 L / 60,8Gal
Water content up to auto fill level	96 L / 25,4Gal
Emptying time from auto fill level (96 L)	3 min
Thermometer display range	10° - 70°C (50°-158°F)
Accuracy of thermometer display	+/-1°C (2°F)

Sound Levels

Sound level at raising / lowering Hi/Lo, no load	61 dBA
Sound level of <i>Air Spa</i>	83 dBA
Sound level tilt, No load	60 dBA

Motion

Raising time with full load (approximately)	16 +/- 5 sec
Lowering time with full load (approximately)	12 +/- 5 sec

Battery

Battery Type	Lead, 24V
--------------	-----------

Battery Type Number 59776

IP Classification

IP Class IP X4

IP Class hand control and *Sound & Vision* Hand control IP X7

Weight

Parker depending on selected options (excluding packaging) 124 - 131 kg

273 - 289 lbs

Recycling

Package Wood and corrugated cardboard, recyclable

The product Electric, steel and plastic parts shall be separated and recycled according to marking on the unit

Battery Recyclable, Not for disposal. Environmental danger. The device contains a lead battery that shall be disposed according to local regulations

SITE PREPARATION

Floor

Maximum floor load 5400 N/m²

Maximum floor pressure 0,6 N/mm²

Operating Conditions

Max ambient temperature 10°C - 40°C (50°F - 104° F)

Max. relative humidity 30% - 95% Rh

Atmospheric pressure range 700 hPa to 1060 hPa

Transport and Storage

Ambient temperature range -30°C - 70°C (-22°F - 158°F)

Relative humidity range 10% - 80% Rh (not condensed)

Atmospheric pressure range 500 hPa to 1060 hPa

Electrical Data: EU and North America

Voltage 230V (EU)
120V (North America)

Frequency 50Hz (EU)
60Hz (North America)

Power consumption (max) 800VA

Number of phases Single phase AC

Protective earth Yes

Potential equalisation Yes

WARNING

**The unit must be connected from the bonding point, labelled on the unit, to the equipotential bonding point of the room.
The unit must be continuously powered and connected to a electrical power disconnection device and to separate fuse with ground fault interrupter in accordance with local codes and regulations.**

WARNING

To avoid risk of electric shock, this equipment must only be connected to a supply mains with protective earth.

WATER SUPPLY

Drain requirement

Flow capacity	100 L/min, 26.4 Gal/min
Position (floor, Wall)	either

Water (Hot and Cold)

Connection	3/4" B.S.P female
Upper limit static pressure	6 bar / 87 PSI
Recommended dynamic pressure, at 8°C (46°F) and at 80°C (176°F) flow of 58 L/min (15,3 Gal/min)	3 bar / 43 PSI
Lower limit dynamic pressure at 8°C and at 80°C and 26 L/min flow (GB)	0,8 bar / 12 PSI
Lower limit dynamic pressure at 8°C (46°F) and 80°C (176°F) degrees and 29 L/min (7,7 Gal/min) flow. (North America without disinfection)	1 bar / 15 PSI
Lower limit dynamic pressure at 8°C (46°F) and 80°C (176°F) degrees and 45 L/min (11,9 Gal/min) flow. (All other markets) (North America with disinfection)	2 bar / 29 PSI
Maximum pressure difference between hot and cold water	+/- 0,5 bar / +/- 7 PSI
Cold water lower limit temperature	2°C (36°F)
Cold water upper limit temperature	25°C (77°F)
Hot water lower limit temperature	60°C (140°F)
Hot water upper limit temperature	80°C (176°F)

Microbiological Demands

Fulfil WHO:s demands on drinking water and the Drinking Water Directive (DWD) in EU

Terms of Use | Privacy Statement

Products

Medical Beds

Lifting & Transfers

Hygiene Systems

Daily Hygiene

Bathing

- Central bathing area

▶ Century

▶ Parker Bath

- Product Specification

- Space Requirements

- Technical Information

- Product Presentation

▶ Rhapsody & Primo

▶ Classic Line

▶ MultiClean

- Private bathing area

- Hygiene Lifters

Burns Treatment

Liquids

Carendo

Enhance Bathing Experience

Therapeutic Surfaces

DVT Prevention

Wound Healing

Disinfection

Therapeutic Support Systems®

Diagnostics

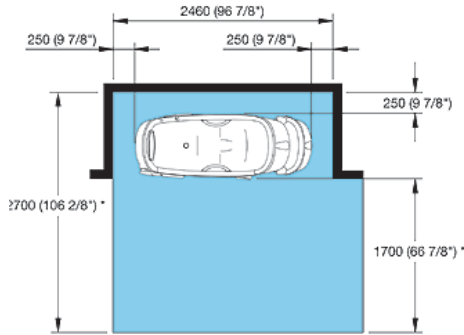
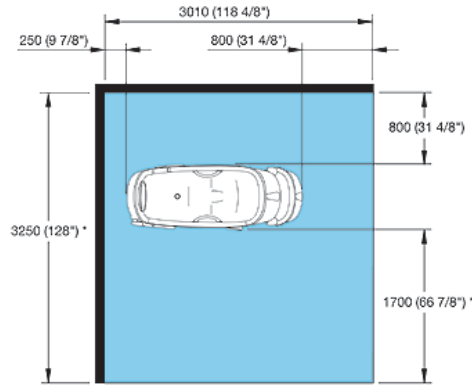
Couches

Special Solutions

Mobility Gallery



Parker Bath - Space Requirements



PARKER BATH

HEIGHT-ADJUSTABLE
RECLINING SIT BATH



DISCOVER A SMOOTHER, SAFER SOLUTION FOR ASSISTED BATHING

It stands alone

The *Parker Bath* from ARJO is a unique reclining bathing system. This bath combines the care-enhancing benefits of side-entry access and powered raising, lowering and reclining. It facilitates smooth assisted bathing routines in unrivalled safety and comfort for residents and caregivers.

It seats all residents

A unique side-entry access system and integral molded bath seat enables easy transfer solutions for all residents, even those with limited mobility, and is especially suited for **Albert, Barbara** and **Carl**. (For the characterization of Albert, Barbara and Carl, - see the Residence Gallery at the back of the brochure).

It can be placed anywhere

Its compact, stand-alone design and flexible utility connections enable the bath to be installed wherever it fits best – in an alcove, “peninsula” or in the center of the room.

It sets new standards

In assisted living nursing home or hospital settings, the *Parker Bath* offers enhanced care in a streamlined, time-efficient bathing cycle free from the risks associated with manual handling.

It stands the test of time

This bathing system has proven to be a durable product based on an innovative concept. Continuous enhancement means the bath is still winning prestigious design awards. A focus on superior product quality ensures the system keeps its attractive, sleek appearance and offers reliable performance throughout a long, intensive service life.





EASY ACCESS: Automatic pre-filling of the bath's footwell, which holds enough water for a comfortable bath, is the start of the unique *Parker* bathing cycle. Residents can seat themselves or be easily assisted with transfers through the full-length side opening. Transfers from lifts are made easy by the arched base of the bath, which enables good access for lifting devices.



GENTLE RECLINE: Once the resident is seated safely inside the bath, the door can be closed. The bath is then gently reclined by pressing a button on the handset. Water flows smoothly from the pre-filled footwell up and around the bather. Alternatively, the tub can serve as a comfortable, easy-access shower cabinet, or the filled footwell can be used for podiatry care.



COMFORT AND SAFETY: In the reclined position, the bath's smooth molded contours and head rest comfortably support the resident. This position also gives the caregiver excellent access to attend to hygiene needs without straining. Another button raises the bath to the correct working height, taking the backache out of bath time. The multiple-speed air spa jets can be activated to provide stimulation and bather relaxation.



WARM CONCLUSION: After bathing, the bath is returned to the upright position and the water flows back into the footwell, allowing the door to be opened immediately. The caregiver can begin drying while the resident is still on the warm bath seat, before assisting with the transfer from the bath.

WELCOME TO A STREAMLINED, STRESS-FREE BATHING CYCLE

The bathing process with a *Parker Bath* from ARJO is safe, comfortable and dignified for the resident at all stages, and involves no manual lifting, strain or stress for the caregiver. Using this bath saves time and resources, as well as the caregiver's back.

From the moment you start pre-filling the bath, you start saving time – and water. The pre-fill delivers enough water to the footwell to provide a comfortable bath while reclined, whereas an ordinary bath would require far more. The caregiver can use the pre-fill time to transport and prepare the resident for the bath.

The bath's unique side-entry access allows easy assisted and unassisted transfers. **Albert***, for instance, would require minimum or no assistance. **Barbara*** can be easily transferred from a walker or active lifter, while **Carl*** can enter from an active or passive lifter. During the transfer, the only physical assistance that may be required is help to position the resident's legs in the warm water of the footwell.

The combination of a handset control, the reclined bath position, and height adjustability means the caregiver can always work close to the resident in a comfortable posture and ensure the bath is at the correct working height. Controls for bath filling and shower functions are within easy reach on the thermostatic control panel, and the stand-alone bath design enables good all-around access.

The optional *MultiClean* enables time-efficient hygiene procedures after each bath to fight the risk of cross infection. It automatically mixes a disinfectant cleaning agent to your pre-selected strength and delivers it to the bath surfaces via a trigger-action showerhead, and through the air spa system for internal hygiene control.

Time saved on transfers and other routine aspects of the bathing cycle means the caregiver has more time to devote to the resident, who in turn enjoys more quality time in the bath. And in the greater scheme of things, a streamlined bathing cycle allows an ideal number of bathing sessions per day in your facility.

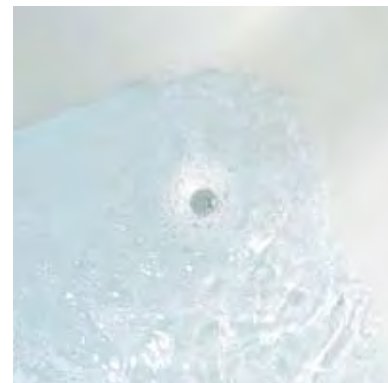
* For the characterization of Albert, Barbara and Carl, see the back of the brochure.



SAFE AT ALL ANGLES: For access to the bath, the door is opened to its fully raised position. However, even if the door is not fully raised, it will remain safely in place.



CLOSE CONTROL: The powered function of the bath are controlled by the waterproof, touch-sensitive handset- which stows away on the towel rail at the head end of the tub.



AIR SPA: For the resident's individual preference, this variable speed air spa blows warm air into the bath water through nine strategically placed jets. This allows for a gentle relaxing spa on a low level setting, and a more invigorating massage on the higher levels.



USING AN ACTIVE LIFTER: The lifter chassis can be driven in under the arched base of the bath for optimum positioning prior to lowering the resident onto the bath seat.



SIDWAYS TRANSFERS: Seat height can be optimized for transfer for fully ambulatory residents, or from a walking frame or wheelchair, simply by raising or lowering the bath.



SCALD PROTECTION: The ARJO Parker Bath incorporates a high performance thermostatic mixer providing protection against scalding from bath or shower water. The bath and shower water can be set independently to ensure maximum allowed water temperatures are not exceeded.



AUTOMATIC BATH FILL: Allows unsupervised pre-filling of the desired water temperature to a preset level (24 gallons/90 liters) at the touch of a button. This provides enough water to the footwell to bathe your resident, and if more water is required, it can be topped off to the required level.



EFFECTIVE HYGIENE CONTROL: The wall-mounted cleaner/disinfection system ensure the bath tub is clean, disinfected and ready for the next resident.

SUPERIOR PRODUCT QUALITY STANDS THE TEST OF TIME

Quality is built into the bathing system at every stage – from innovative design and selection of high-quality materials to advanced laminating technology and hand-finishing.

Dedication to design and quality, the continually enhanced *Parker Bath* has won numerous awards over two decades- from “The Prince of Wales’ Award” for Industrial Innovation to the prestigious “US Nightingale Award”.

High-quality design remains a top priority. A special design team works to continuously develop the *Parker Bath*. You can be assured that the *Parker Bath* offers the most advanced features available for improving the safety and comfort of bather and caregiver alike.

A high-quality material, glass-reinforced plastic (GRP), is used because it is warm to the touch and offers comfortable support – factors that enhance quality of life for residents. This durable material also offers a range of bath color alternatives, as well as allowing the high- quality finish that gives the bathing system the strength to withstand continued use.

Each bath is built to the customer’s specification and can incorporate options such as air spa, soap dispenser, Auto-fill and the cleaner/disinfection system, *MultiClean*. A range of support accessories for head, back and lower limbs, covers individual bathers' extra comfort needs.

At each stage of the production process, quality is controlled according to the ISO 9001:2000 and ISO 13485:1996 standard. The *Parker Bath* from ARJO is CE marked and holds the relevant Medical Electrical Equipment approvals for markets throughout Europe and North America.

Superior product quality shows not only in everyday



SCALE OPTION: An optional, wall-mounted, digital scale is available which increases efficiency, eliminating the need for an extra transfer.

use, but also when the unexpected happens. The bath offers safeguard features such as:

- A battery back up system for emergency lowering if the main power fails
- Thermostatic control with built-in scald protection

This attention to quality means the *Parker Bath* from ARJO can be relied on to perform its important safety and comfort-enhancing role in assisted bathing, day after day. In the future this, this, lasting quality ensures the bath will retain its attractive appearance during a long service life, handling the heavy workload of a nursing home or hospital bathing facility.



AIR SPA DISINFECTION: The air spa can be fully disinfected by flushing through with ARJO Cleaner/Disinfectant. This economical method reduces bacterial loads to a safe level.



INTERNAL GRAB RAIL: Contoured for maximum grip, the two grab rails provide additional support for the bather when entering or leaving the bath.



HEAD SUPPORT: A soft molded head cushion, attached by suction cups, offers support for bathers who may need extra comfort.



WATERTIGHT SEAL: When the door lever is in the locked position, the closed door forms a secure and watertight seal to the bathtub.



LIQUID DISPENSER: No more time spent searching for bath oil or body wash. The rim-mounted, pump action accurate dispenser provides liquid dispensing on demand.



POP-UP DRAIN/OVERFLOW: The pop-up drain enables quick outflow of water and is positioned so you can operate it without putting your hands in the water.



FOOTWELL FOR FEET: The footwell is used for the automatic pre-fill (24 gallons/90 liters) and, if the air spa is fitted, five jets can enhance soothing podiatry care sessions.



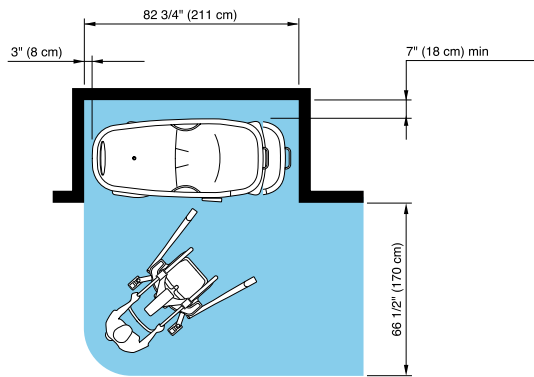
LEG SUPPORT: The optional leg rest offers comfortable support for a lower limb if it needs to be kept out of water during bathing or podiatry care sessions.



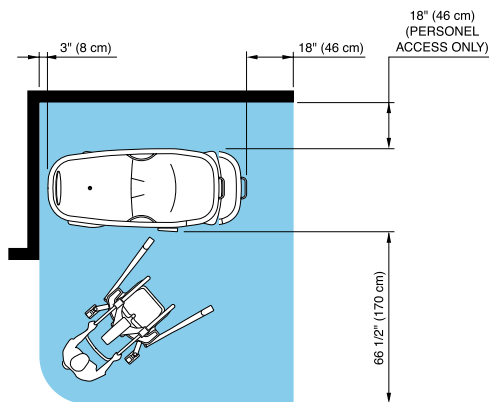
QUALITY FROM START TO HAND-FINISH: You can feel the difference. The immaculately smooth contours of the *Parker Bath* from ARJO can only be achieved by hand-finishing. Skilled craftsmanship is needed to provide the finishing touches to a surface that possesses two essential qualities: it is smooth enough to gently support the often highly delicate skin of residents, yet also tough enough to withstand years of intensive use in shared bathing environments.

PRODUCT SPECIFICATIONS

Space requirement



ALCOVE / CORNER POSITION



PENINSULAR POSITION

Blue area shows the minimum working area required for the staff to be able to use the mechanical aids in an ergonomic way from one side.

Resident Gallery

Suitable for Albert, Barbara and Carl



- A Albert** who is ambulatory and independent
- B Barbara**, who can support herself to some degree
- C Carl**, who sits in a wheelchair and has little capacity to support himself
Please contact ARJO for further information on the Residents Gallery.

Product information

Total weight	288 lbs (131 kg)
Lifting capacity	419 lbs (190 kg)
Water consumption*	24 gallons (90 liters)
Filling time at 300 kPa dynamic pressure	1.6 minutes
Emptying time*	2.2 minutes
Coupling (HW/CW)	1/2" ROW
Minimum pressure (HW/CW)	4.5 psi (30 kPa)
Maximum pressure (HW/CW) D08 WP	73 psi (520 kPa)
Maximum HW Temperature D08 WP	194° F (90° C)
Minimum HW Temperature D08 WP	132° F (56° C)
Maximum CW Temperature D08 WP	68° F (20° C)
The tub is equipped with a waste trap	1 1/2" (40 mm)
Minimum drainage capacity	10.9 gallons (41.5 l/min)

North American Electrical Demands:

Still Bath	120V (fuse 10A slow blow)
Air Spa	120V (fuse 10A slow blow)

Approvals

CE marked through TÜV, UL

Colors Available:

ARJO Color	(two tone - interior white, outer shell-gray with blue trim)
White	(with grey or blue trim)
Cream	(with grey or blue trim)
Peach	(with grey or blue trim)
Pale Blue	(with grey or blue trim)
Ivory	(with grey or blue trim)
Pale Green	(with grey or blue trim)

* pre-filled foot well volume

Use only ARJO Designed Parts, i.e. parts specifically designed for the purpose, on equipment and products supplied by ARJO. Our Conditions of Sale specify that ARJO is not liable for injuries attributable to the use of inadequate parts. Continuous development is part of our policy, and we therefore reserve the right to change specifications without notice.

Parker Bath, MultiClean and Resident Gallery are trademarks belonging to ARJO International AG

ARJO

...with people in mind.

ARJO Canada Inc.
1575 South Gateway Road
Mississauga, ON L4W 5J1
Phone: 800-665-4831
Fax: 800-309-1116
www.arjo.ca

4606710 da



Products > Healthcare Products > Responder 5

Responder[®] 5: Delivering Speed And Simplicity In A Complete Nurse Call System

Fast, Direct Communication

With Responder 5 the right person gets the right call at the right time. Calls coming from a patient can be relayed directly to the nurse's wireless phone or pager - real time. Nurses can consult with other staff members or with physicians - direct contact. Best of all, this nurse call system is quiet - which promotes a healing stress free environment.

Simple to Use, Easy to Learn

Responder 5 use is intuitive - so training staff is easy. With one touch of a button a nurse can be reached, a call can be forwarded or canceled, and a nurse can contact other hospital staff. Sign on and off duty takes only seconds - promoting efficiency. Everything about Responder 5 relieves nurses from wasted effort, so they can spend more time on what matters most - quality patient care.

Streamlined Workflow

With Responder 5, the push of one button in surgery can tell environmental services to clean the room, central supply to stock supplies, and the PACU that a patient is coming from surgery. Because the system integrates with other technologies (such as wireless phones and pagers), staff can work more efficiently and effectively.

Complete and Customized Solution

Responder 5 connects patients to staff by linking the capabilities of the latest wireless technology with traditional "nurse call" equipment. Responder 5 is designed to fit each hospital's environment. Our certified distributors understand hospital systems and processes and make Responder work to its greatest advantage in each case. They will work to customize Responder 5 to fit your call process so the system works like you do.

Extraordinary Quality and Service

Rauland-Borg's track record illustrates our customer commitment. Our only business is the design and manufacture of communications and life-safety equipment for institutional environments. We're the industry leader for a good reason. We are nurse call.

We'd like to tell you more. [Contact us.](#)

© 2013 Rauland [Terms of Use](#) [Legal](#) [Privacy Policy](#)

[Contact Us](#) [Home](#) [Site Map](#)





Listed

RJ-250 SC-ET

Self-Contained Compactor



*Featuring
Extra Wide
Clear-top
Opening and
Low Feed
Height*

ET Features

- Extra-wide ram, clear-top opening (78" x 40") accepts larger material
- Low feed height (43 1/2") - great for ground feed applications, greater slope in chute feed applications, and low dock height applications
- Full "P" shaped door seal and patented double-hinge provides liquid tightness
- Qwik Clean Tank® flushes the area behind the ram
- 12" high sump area contains liquid
- CYCON Life-Xtender® provides advanced performance, higher compaction ratios, and smoother, quieter operation



Signature Series Warranty

Featuring 3 Years Structure
2 Years Components
6 Months Labor



Specifications:

Charge Box Capacity		
[Mfrs. Rating]	2.0 cy	1.53 m ³
WASTEC Rating]	1.4 cy	1.07 m ³
Total Capacity	34 cy	26 m ³
Clear Top Opening	40" D X 78" W	1016mm x 1981mm

Performance Characteristics:

Cycle Time	33 s	33 s
Total Normal Force	39,900 lb	178 kN
Total Maximum Force	49,500 lb	220 kN
Normal Ram		
Face Pressure	24.8 psi	171 kPa
Maximum Ram		
Face Pressure	30.8 psi	212 kPa
Ram Penetration	6"	152 mm

Electrical Equipment:

Electric Motor		
3/60/230-460	10 hp	7.5 kW
Electric Control Voltage	120 VAC	120 VAC
UL Labeled Panel Box, All Circuits Fused		
3 Button Controls: KeylockStart/Emergency Stop/Reverse		

Hydraulic Equipment:

Hydraulic Pump	10 gpm	38 L/min
Normal Pressure	1850 psi	128 bar
Maximum Pressure	2300 psi	159 bar
Hydraulic Cylinder Bore	4"	102 mm
Hydraulic Cylinder Rod	2.5"	64 mm

Overall Weight12,700 lbs.....5761 kg

Units must conform to ANSI guidelines with a totally enclosed hopper, "Hold-To-Run" button or extended hopper to prevent reaching into charge box.

RAMJET RJ-250SC-ET Compactor/Container

Marathon's **Remote Power Pack**, separate from the compactor/ container, features easy-to-use, hydraulic quick disconnects to couple power unit to packing head. **Weather Cover** and the **UL & CSA Rated Panel Box Assembly** are standard.



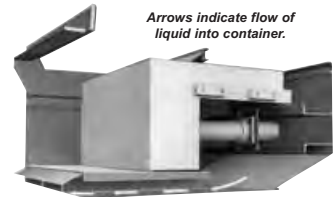
The **"P" Shaped Full Door Seal** provides a water tight seal for superior liquid retention.

The bustle gate features Marathon's patented **Double Hinges** which assures liquid retention by providing uniform seal compression without seal "scrubbing" and damage. Each unit is factory tested for liquid tightness.



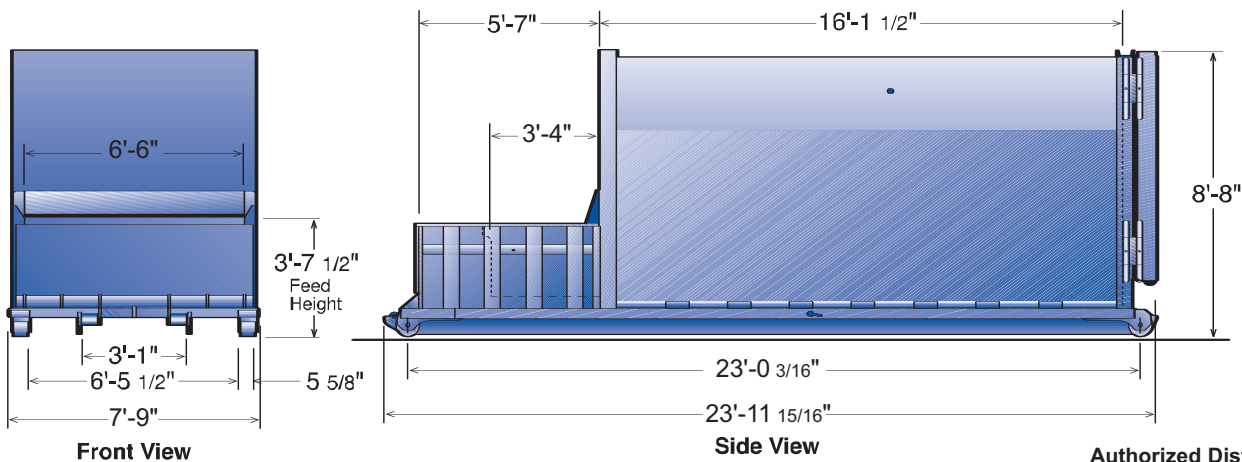
The **Qwik Clean Tank**® with the exclusive **Trash Check**™ feature, funnels any liquid seepage during compaction into an enclosed area underneath the charge box floor. The liquid is automati-

cally discharged at the disposal site, in effect flushing the container and the area behind the ram. The 12" high sump holds liquid and is designed to provide easier hook access for roll-off drivers.



Arrows indicate flow of liquid into container.

Marathon's exclusive **CYCON Life-Xtender**®, provides reliable solid state circuitry that eliminates all pressure and limit switches. The "no shock" feature extends cylinder and hose wear life. The automatic "container full assurance system" causes the ram to dwell against the load at full pressure resulting in superior compaction ratios.



Authorized Distributor:



MARATHON EQUIPMENT COMPANY

P.O. Box 1798 • Vernon, AL 35592-1798 USA • (205) 695-9105 fax (205) 695-7250 **1-800-633-8974**
 130 Hwy. 339 • Yerington, NV 89447 USA • (775) 463-4030 fax (775) 463-4531 **1-800-624-5724**
 1102 Industrial Park Rd. • Clearfield, PA 16830 USA • (814) 765-0200 fax (814) 765-2072 **1-800-922-7062**

Visit our web site: MarathonEquipment.com

Pictures in this literature are illustrative only. Specifications are subject to change without notice in order to accommodate improvements to the equipment. Certified in compliance with ANSI Regulation Z245.21, all OSHA standards, and certified under WASTEC's Compactor Certification Program. Products must be used with safe practice and in accordance with said regulations and standards.



Prod. no: 3122005, 3122006, 3122009, 3122010
 3122007, 3122008, 3122011, 3122012

3EN200101-01

2007-02-07

Maximum load:	200 kg / 440 lbs.
Batteries:	Two 12 V, 2.6 Ah, valve-regulated lead-acid gel-type batteries. New batteries are available from Liko.
Battery charger:	100 - 240 VAC, 40-60 Hz, max. 600 mA.
Lifting speed:	5 cm/s
Lifting range:	200 cm (height adjustable)
Electrical data:	24 V, 12 A
Lift unit dimensions:	340x250x165 mm. LxWxH 13.4x9.8x6.5 inch. LxWxH
Lift unit weight:	13 kg / 28.7 lbs (S, ES) 13.2 kg / 29.1 lbs (S R2R, ES R2R)

Emergency lowering:	Electrical and mechanical (not mechanical on R2R)
Intermittent operation:	Int. Op 10/90, active operation max 6 min. Out of a time of 100, active must be less than 10, though not more than 6 min.
Degree of protection:	IP 43



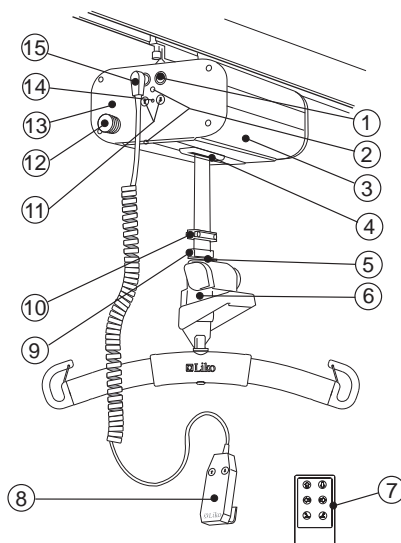
Intended for indoor use.



Type B, according to the degree of protection against electric shock.

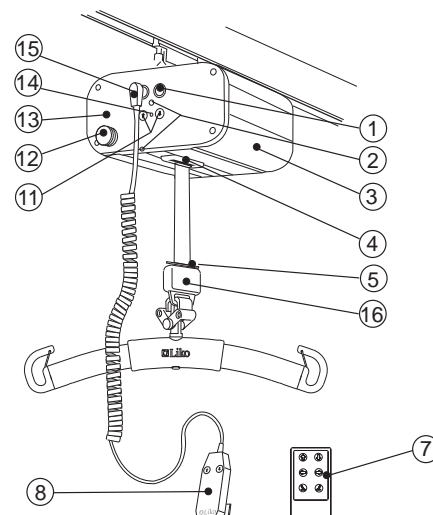
Product Description

Likorall 242 ES, 242 S



1. Contact for Transfer Motor (not model S) / Contact rail
2. IR receiver (not model S)
3. Lift unit
4. SSP Limit Switch
5. Hang-up
6. Emergency lowering, mechanical (not R2R)
7. Handcontrol Remote IR
8. Handcontrol

Likorall 242 ES R2R, 242 S R2R



9. Movable strap stop (not R2R)
10. Strap stop (not R2R)
11. Emergency lowering/raising (electrical)
12. Emergency stop
13. End plate
14. Charging indicator
15. Contact for handcontrol
16. Q-link (only R2R)


Likorall has SFS (Single Fault Safety) spool and speed guard. The lift strap has a ten-fold safety margin.


Products from Liko comply with Medical Device Directory MDD 93/42/EEC. Repairs and maintenance may only be carried out by Liko authorized personnel using original Liko spare parts.


Technical specifications

Lifting capacity:	250 kg (550 lbs)
Batteries:	Two 12 V 2.6 Ah valve-regulated lead-acid gel-type batteries. New batteries are available from Liko.
Battery charger:	100-240 V, 40-60 Hz, max. 600 mA.
Lifting speed:	5 cm/s (1.97 inch./s)
Lifting interval:	210 cm (82.7 inch.) (height adjustable)
Power:	24 V, 13 A
Lift unit dimensions:	320x250x125 mm. LxWxH (12.6x9.8x4.9 inch. LxWxH)
Lift unit weight:	12,6 kg/28 lbs.

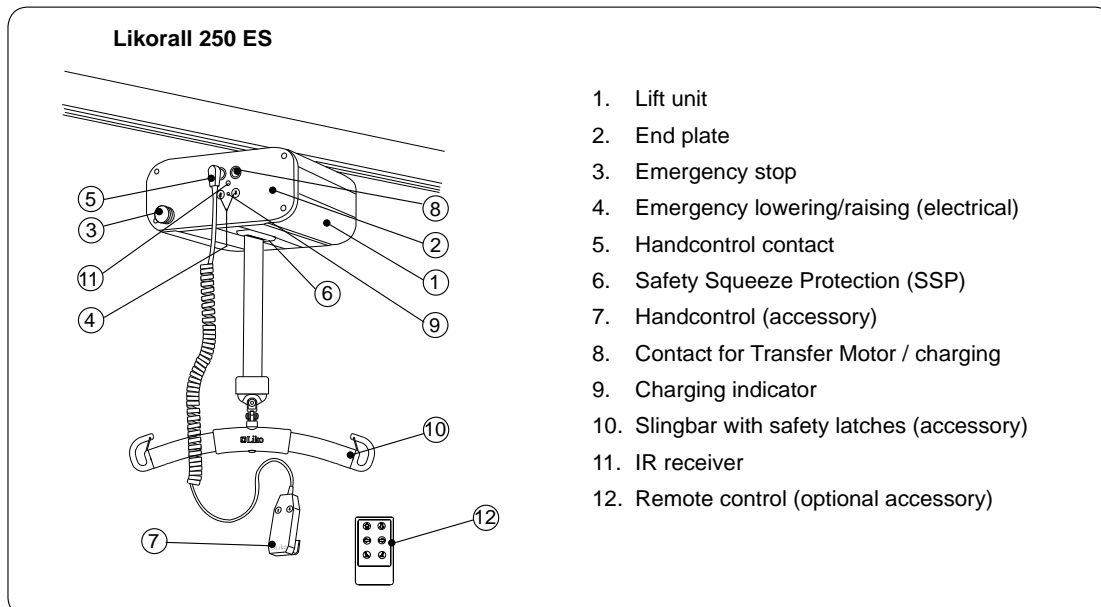
Material:	Anodized aluminium
Emergency lowering:	Electrical
Intermittent operation:	Int. Op 10/90, active operation max 6 min. Out of a time of 100, active must be less than 10, though not more than 6 min.
Degree of protection:	IP 43

 Intended for indoor use.

 Type B, according to the degree of protection against electric shock.

 Class II equipment.

Product description



Likorall 's lift strap has a ten-fold safety margin and a strap drum with SFS (Single Fault Safety) and tachometer relay.

Products from Liko comply with Medical Device Directory MDD 93/42/EEC. Repairs and maintenance may only be carried out by Liko authorized personnel using original Liko spare parts.



PACK MULE

RELIABLE PRODUCTS AND SERVICE



TOW VEHICLE

BCG 6200 STANDARD FEATURES

- Hydraulic Rear Shock Absorbers
- Heavy Duty Leaf Spring Rear Suspension
- Curtis 400 Amp DC Motor Controller
- Programmable Speed Controls
- 6 Inch Hydraulic Disc Brakes
- Regenerative Braking
- Universal Hitch Plate
- On-board Diagnostics
- Maintenance Management System
- Heavy Duty Direct Drive Transaxle
- Battery Discharge Indicator
- On-board High Frequency 3 Stage Charger
- 7 Gauge Steel Frame Construction
- BDI/Hour Meter Data Display
- Parking Brake



BCG 6200 Shown with optional equipment



Industrial environments demand a special kind of equipment. Wesley International's Pack Mule electric vehicles are meticulously engineered for safety, reliability, and low cost of ownership. From the dual front wheels to the sealed motor, Wesley International's vehicles offer increased stability and reduced down time. As a result, Pack Mule electric vehicles have been the choice of discerning operators and buyers who know that increased productivity and reduced maintenance cost deliver greater profits.

Pack Mule's BCG 6200 series vehicles are designed to tow up to 8000 lbs while carrying a single operator. The BCG 6200 is perfect for use in lean, just in time manufacturing operations, distribution centers, warehouses and anywhere towing a load is required. Each vehicle can be purchased in a standard configuration or Wesley International will custom build a vehicle to your specifications. Custom equipment can be designed and produced quickly and is made with the same commitment to safety, reliability, and low cost of ownership.

Wesley International
3680 Chestnut Street
Scottsdale, GA 30079
4606719.4

BY
WESLEY

Attachment 2 to Appendix 2D1 - Equipment Data Sheets (Swift Current Long Term Care Centre Project)

Sales: 800-241-2869
Fax: 404-292-8469
sales@wesleyintl.com
www.wesleyinternational.com
EXECUTION COPY



PACK MULE

RELIABLE PRODUCTS AND SERVICE



TOW VEHICLE

BCG 6200 OPTIONAL EQUIPMENT

- AC Drive System
- LED Headlight/Tailights
- Non-Marking Tires
- Diagnostic Handset
- 7 inch Mechanical Drum Brakes
- Various Hitches
- Bumper System
- Safety Options
 - Left Foot Operator's Presence Switch
 - Back-Up Alarm
 - Proximity Alarm
 - Flashing Safety Beacon
 - Mounted Clipboard
 - 12v Power Output

SPECIFICATIONS	BCG 6200
Maximum Personnel	1
DIMENSIONS	
Length	85 in (215.9 cm)
Width	36 in (91.44 cm)
Height	40.5 in (102.87 cm)
Wheel Base	60.75 in (154.31 cm)
Ground Clearance	4.5 in (11.43 cm)
Deck Height	25.5 in (64.77 cm)
Deck Size	36 in (91.44 cm) x 21.38 in (54.31 cm) front deck 36 in (91.44 cm) x 25 in (63.5 cm) rear deck
CAPACITIES*	
Load Capacity	1,000 lb. (453.59 kg)
Towing Capacity	8,000 lb. (3628.74 kg)
WHEELS & TIRES	
Wheels	4
Tires Pneumatic	4.80 x LR B
ELECTRICAL	
Battery Type	245 amp hour
System Voltage (Battery Quantity)	36 volt (6-6 volt) 48 volt (6-8 volt)
Sealed Motor	Sep Ex DC Motor
Sealed Programmable Controller	400 amp
Automatic Built-in Charger	High Frequency Onboard with Remote Display Option
Instrumentation	LED Battery Discharge, LCD Hour Meter
Removable Key Switch	3 Position Safety Key Switch
Horn	Instrument Panel
STEERING, BRAKES & SUSPENSION	
Steering	3 Spoke Contour Steering Wheel
Service Brakes	6 Inch Hydraulic Disc Brake
Electronic Brakes	Programmable Electronic Regenerative Braking
Parking Brake	Console Mounted

* Not to be combined. Can carry load or tow.

Specifications subject to change without notice. Wesley International electric vehicles are designed to conform with ANSI B56.8 and OSHA standards.



Wesley International
3680 Chestnut Street
Scottsdale, GA 30079
4606719.4

BY
WESLEY

Attachment 2 to Appendix 2D - Equipment Data Sheets (Swift Current Long Term Care Centre Project)
EXECUTION COPY

Sales: 800-241-2869
Fax: 404-292-8469
sales@wesleyintl.com

www.wesleyinternational.com